

Inner Loop East Study

CSJ: 0917-00-079

Public Meeting

Thursday, Nov. 7, 2024

HOW TO STAY INVOLVED:

 979-383-2036

 BrazosInnerLoopEast@quiddity.com

 brazoscountytexas.gov/653/Inner-Loop-East



Scan to visit the
study webpage



PUBLIC MEETING PURPOSE



Inform the public about the study and share new alignment options for a potential new roadway



Collect public input about the study and the alignment options



Introduce the study and provide the public an opportunity to visit with the study team and ask questions



Develop a record of public participation

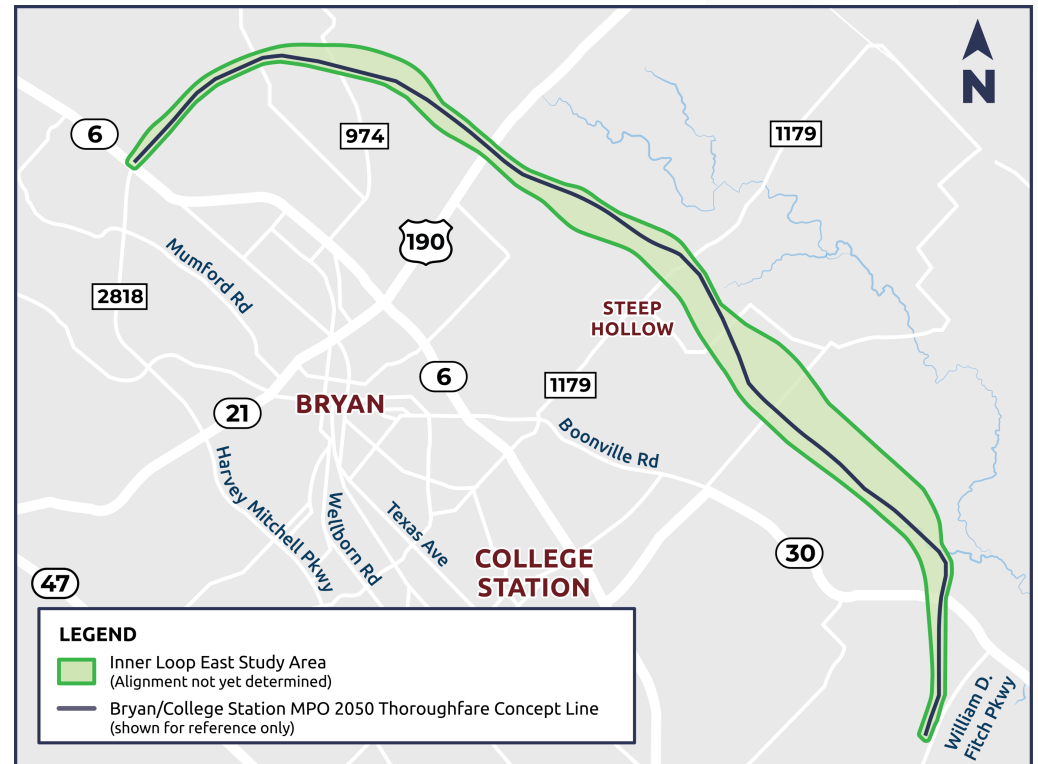
STUDY BACKGROUND AND OVERVIEW



Brazos County in partnership with the Texas Department of Transportation and the Cities of Bryan and College Station, is studying the feasibility of a new roadway that would loop the eastern areas of Bryan and College Station.

This new roadway would enhance local and regional connectivity and is part of a continued effort to improve transportation in the community.

The study is funded through Brazos County's voter approved Transportation Road Improvement Bond Program (TRIP) 2022 bond.



Study Limits: SH 6 at FM 2818 in Bryan to William D Fitch Parkway in College Station

Study Length: 20 miles

The study area was based on the Bryan/College Station MPO 2050 Thoroughfare Concept map that was adopted at the June 26, 2017 Policy Board Meeting.

STUDY PHASES



What is a Feasibility Study?

Brazos County is in the early stages of project development and is working to determine the most feasible, or logical, location for a new roadway alignment. This type of high-level study analyzes preliminary technical and environmental data and stakeholder and public input to identify next steps in project development.



Input from the public is important and considered at every phase of project development

DRAFT NEED AND PURPOSE



Need

The proposed project is needed because there is a lack in north-south connectivity through Brazos County resulting in reduced mobility and congestion on the existing system and the inability to meet future traffic volumes.

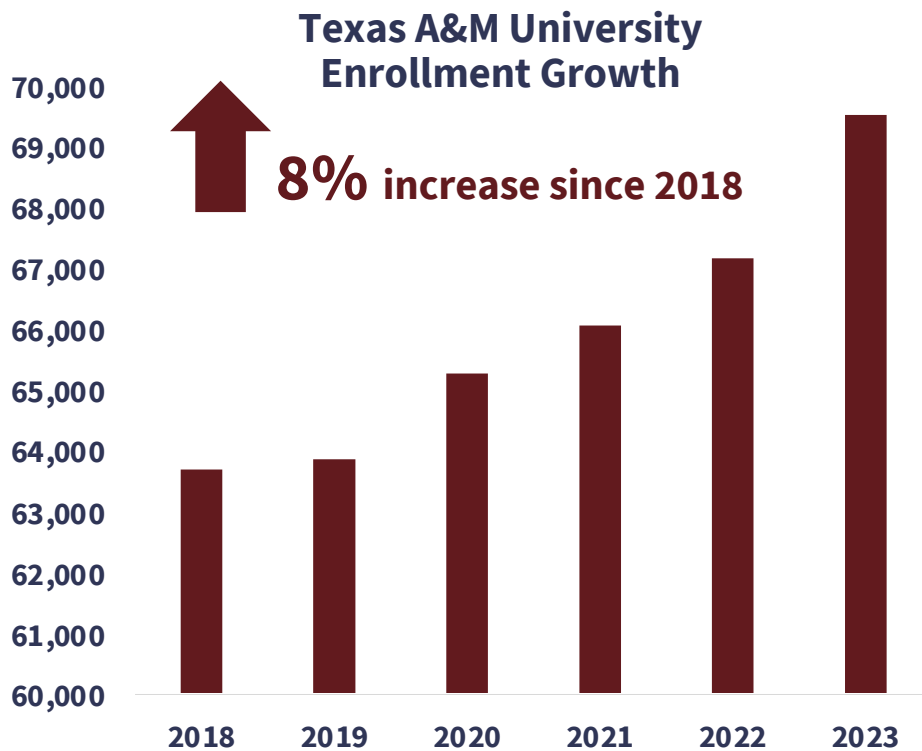
Purpose

The purpose of the proposed project is to improve mobility when traveling north to south through Brazos County and to accommodate future traffic due to the projected population growth.

STUDY AREA GROWTH



The Texas Triangle connects the metropolitan areas of Dallas/Fort Worth, Austin, San Antonio, and Houston. Brazos County and the Cities of Bryan and College Station are at the heart of The Texas Triangle offering economic opportunities to Texans and major employers.



POPULATION

Texas Triangle:
35M+
by 2050
70% of Texas' population

Brazos County (unincorporated):
371,000+
by 2045
91% increase

Bryan:
101,000+
by 2045
33% increase

College Station:
160,000+
by 2045
71% increase

ENVIRONMENTAL



National Environmental Policy Act (NEPA)

Understanding the environment, and potential impacts is an important aspect of project development and selecting a preferred alignment. Several factors are considered during environmental evaluations.



Biological Resources



Pollution and Noise



Water Resources



Community and Social Impacts



Historic and Archeological Impacts



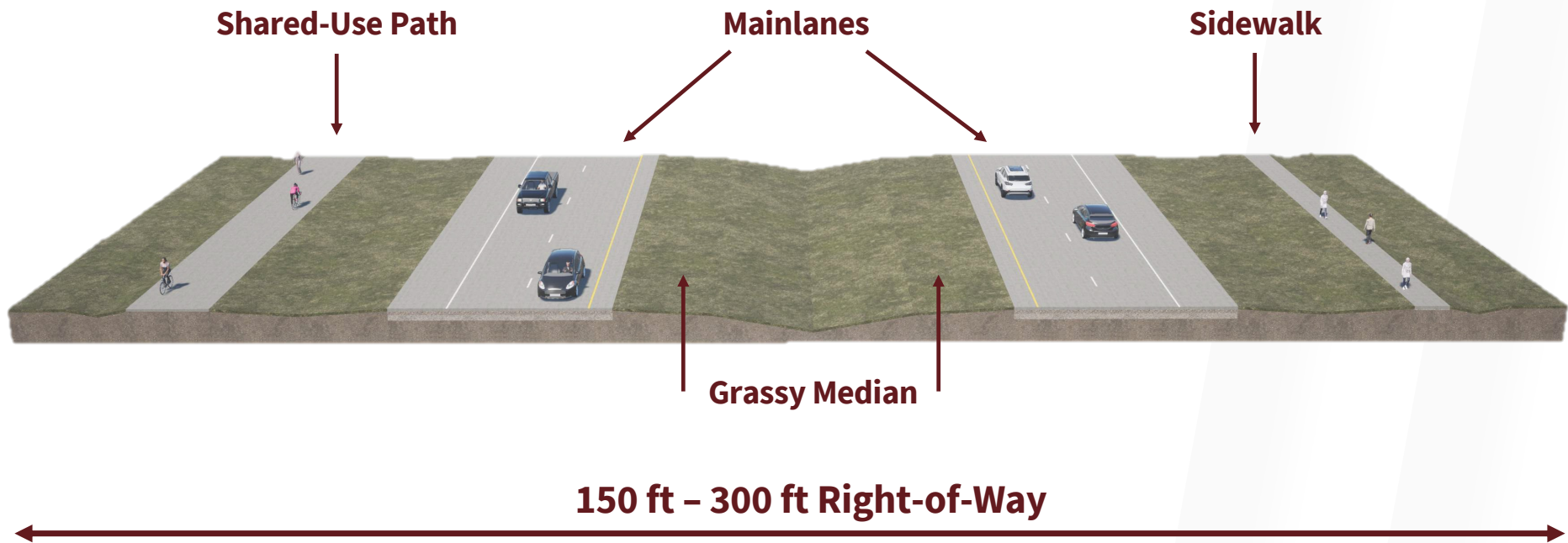
Hazardous Materials

The environmental review, consultation, and other actions required by applicable Federal environmental laws for this project are being, or have been, carried out by TxDOT pursuant to 23 U.S.C. 327 and a Memorandum of Understanding dated December 9, 2019 and executed by FHWA and TxDOT.

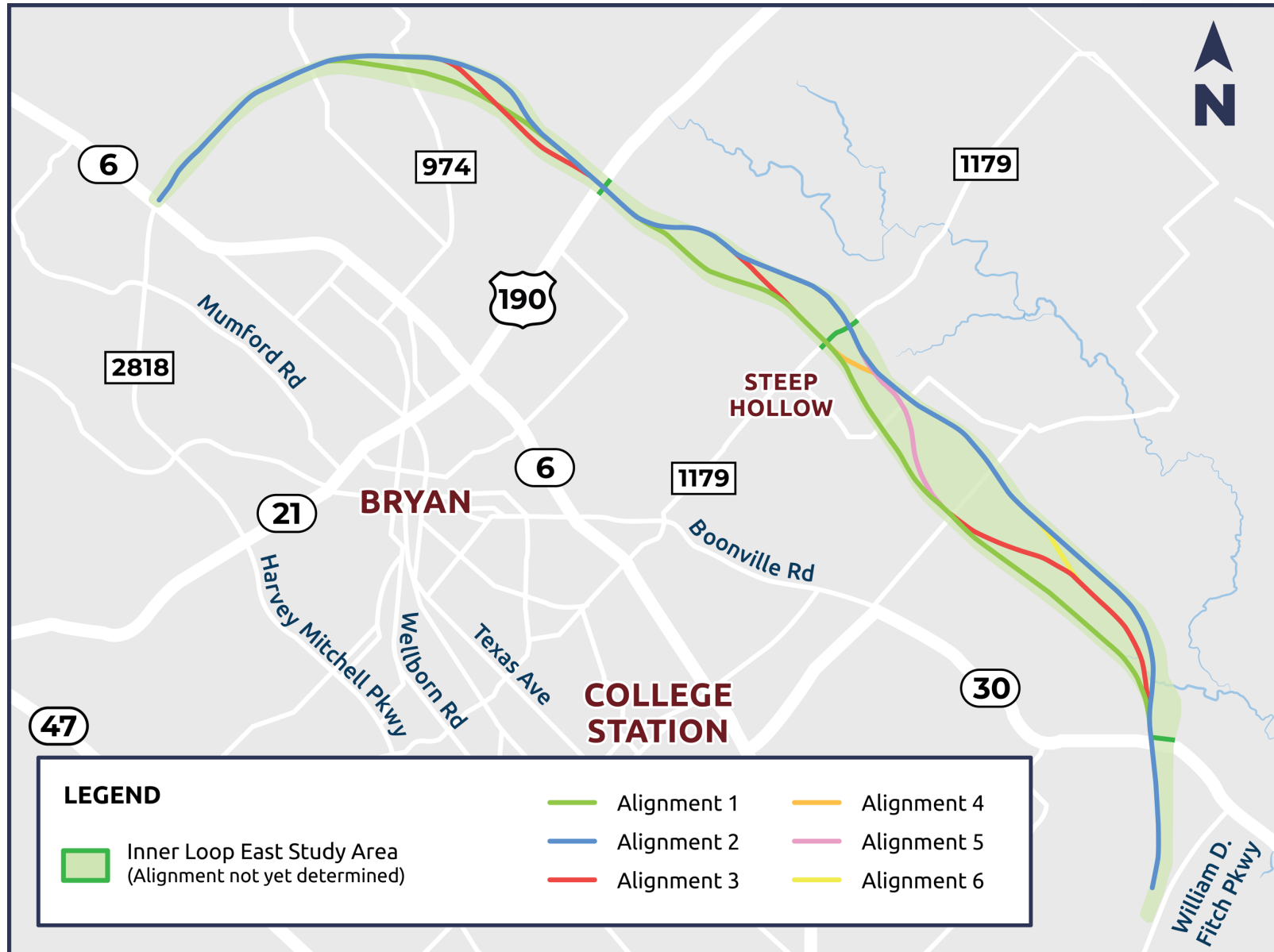
CONCEPTUAL TYPICAL SECTION



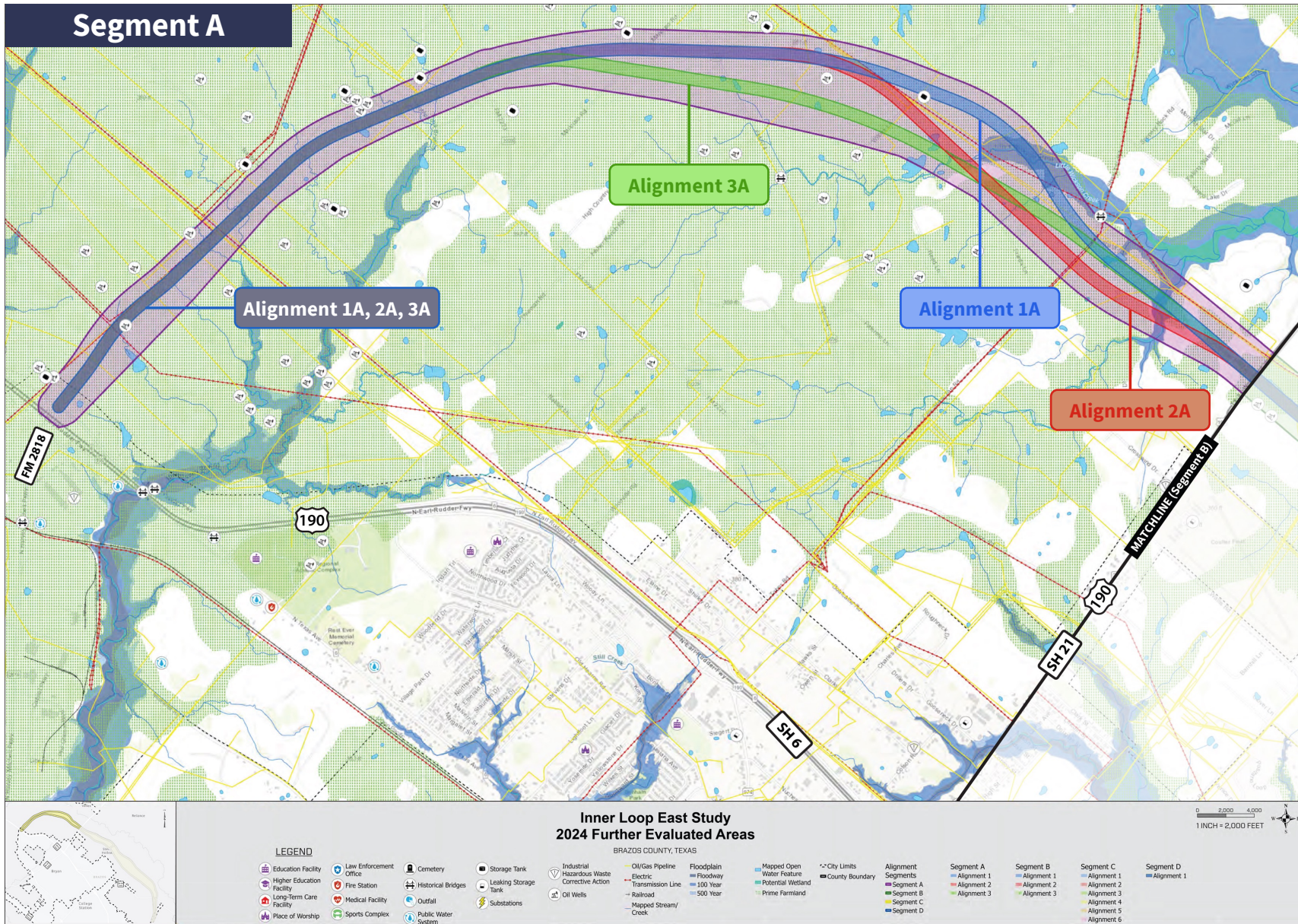
The roadway could be constructed in phases with the first phase being constructed with minimal lanes until travel demand increases and additional lanes are needed.



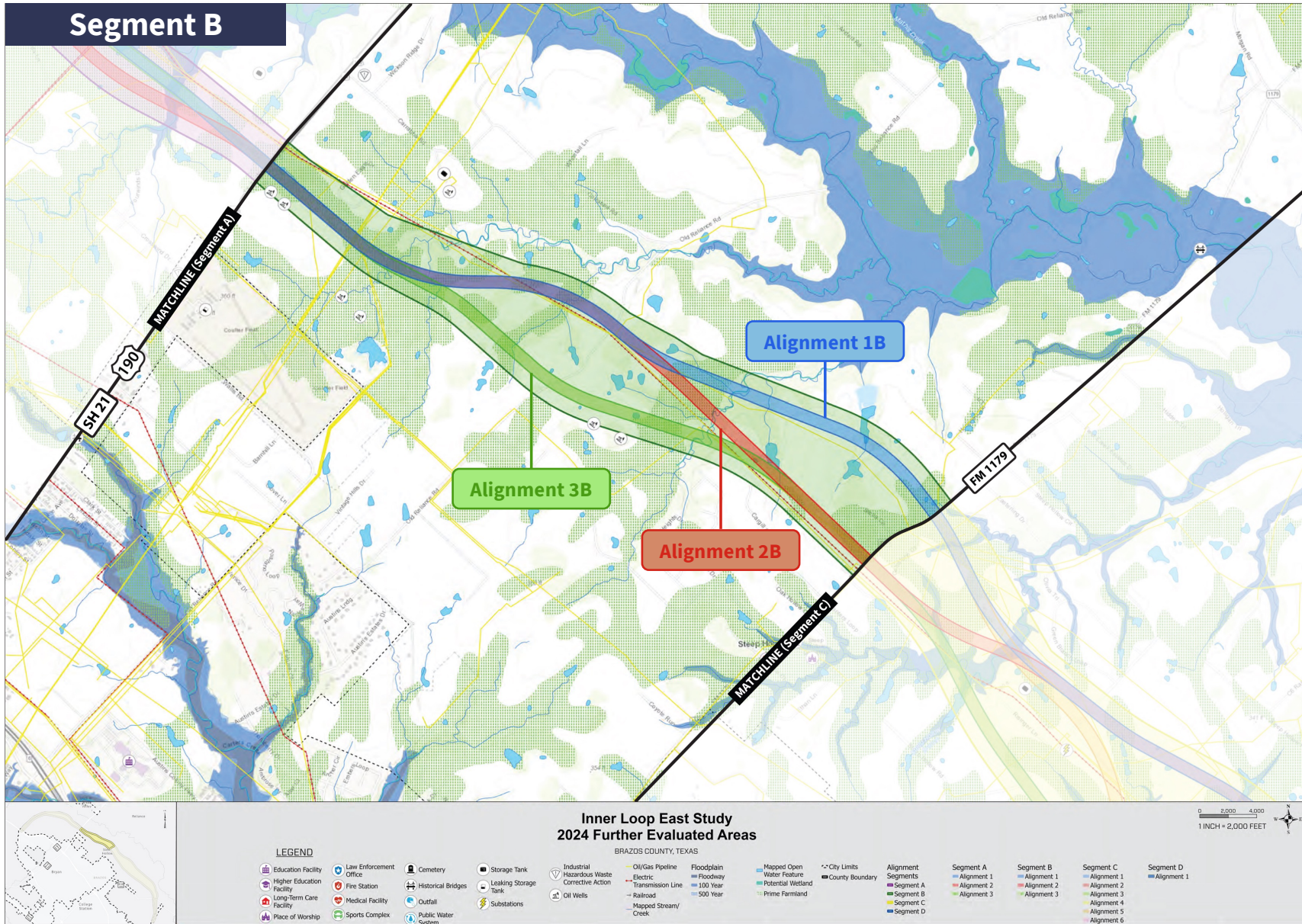
PRELIMINARY ALIGNMENT OPTIONS



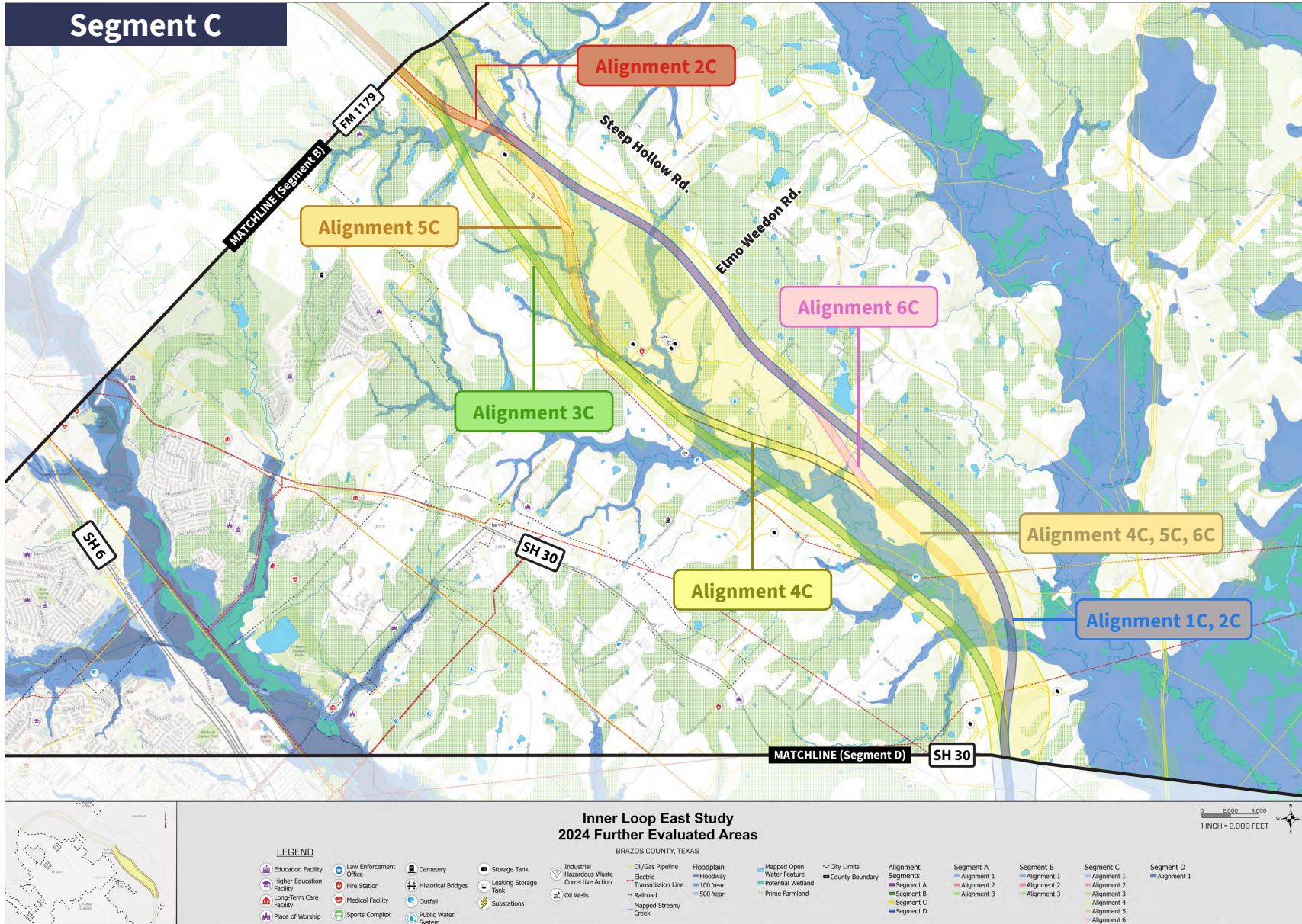
PRELIMINARY ALIGNMENT OPTIONS



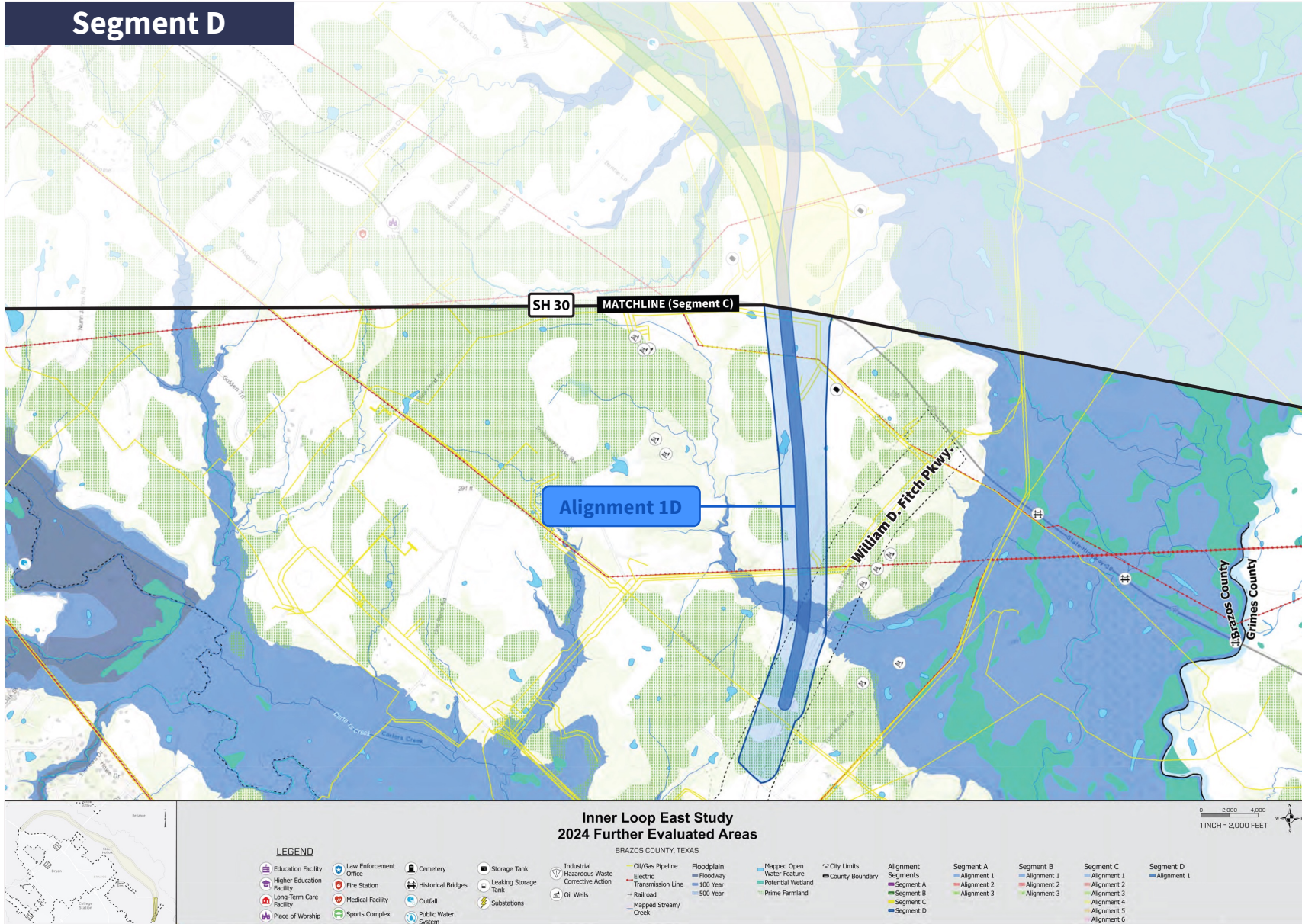
PRELIMINARY ALIGNMENT OPTIONS



PRELIMINARY ALIGNMENT OPTIONS



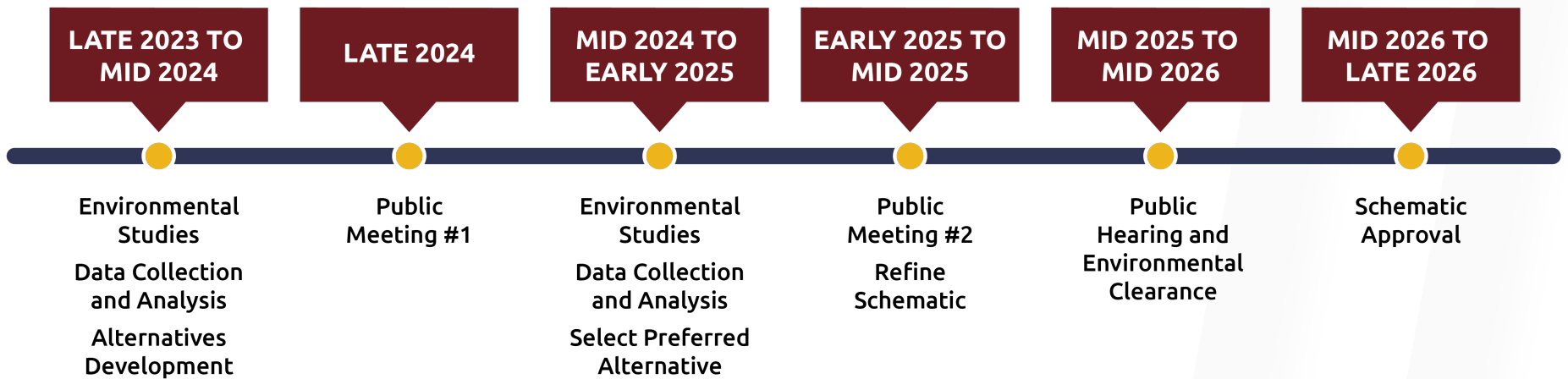
PRELIMINARY ALIGNMENT OPTIONS



NEXT STEPS



PUBLIC INVOLVEMENT AND PROPERTY OWNER COORDINATION



HOW TO PROVIDE INPUT



All comments must be **postmarked by Friday, Nov. 22, 2024**, to be included in the official public meeting record.



**Mapping
Activity**



**Comment
Card**



Email

BrazosInnerLoopEast@quiddity.com



Mail

Inner Loop East Study
c/o CD&P
PO Box 5459
Austin, TX 78763



**Voicemail
or Text**

979-383-2036



**Scan to share your
comments online**